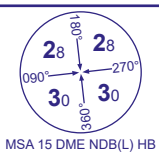
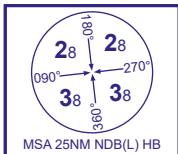


INSTRUMENT APPROACH CHART - ICAO

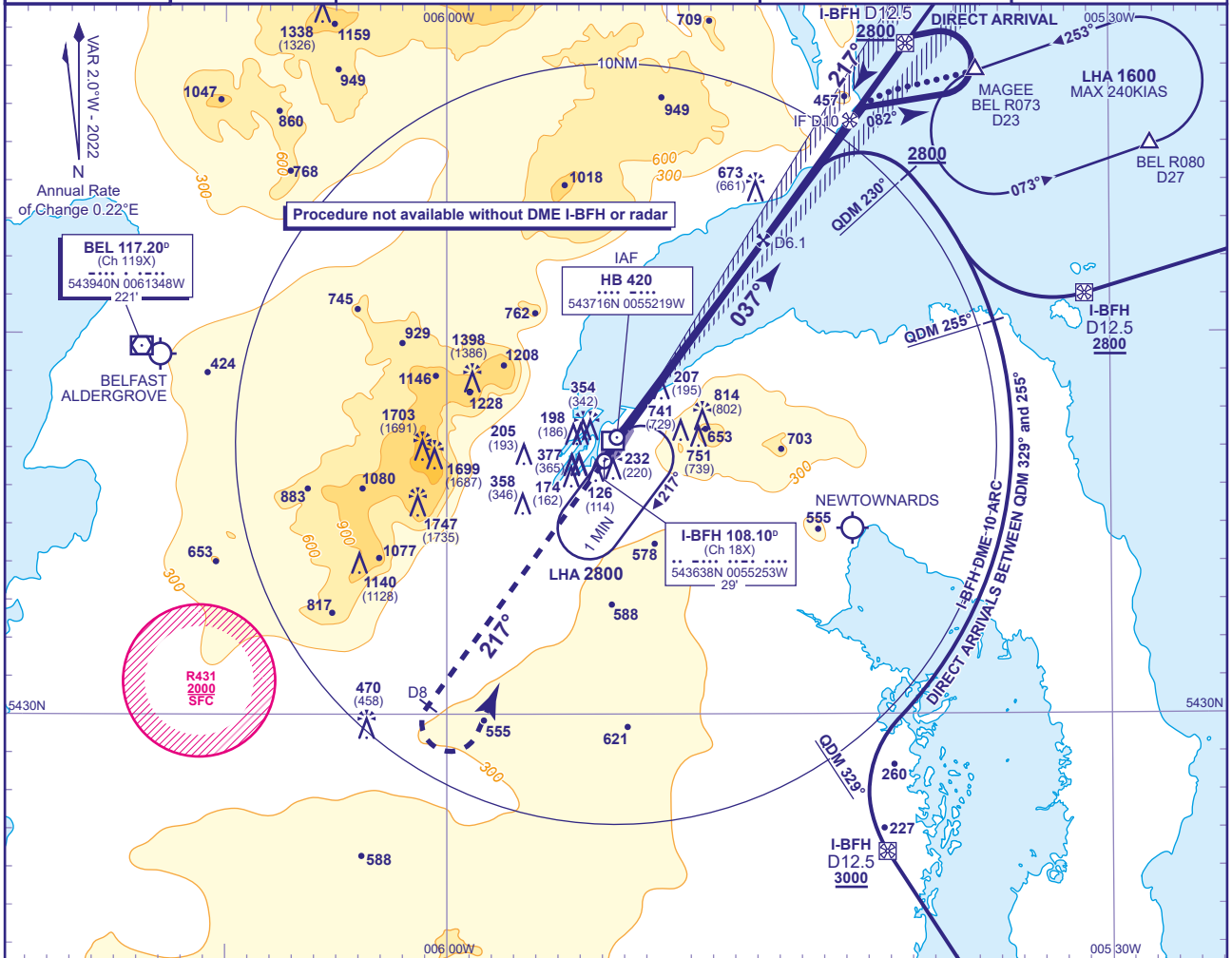
BELFAST CITY
ILS/DME/NDB(L)
RWY 22
(ACFT CAT A,B,C)

APP	130.850
TWR	122.830
RAD	134.800
ATIS	124.580

BELFAST APPROACH
BELFAST TOWER
BELFAST RADAR
BELFAST INFORMATION

AD ELEVATION	15
THR ELEVATION	12
OBSTACLE ELEVATION	1744 AMSL (1732) (ABOVE THR)

BEARINGS ARE MAGNETIC

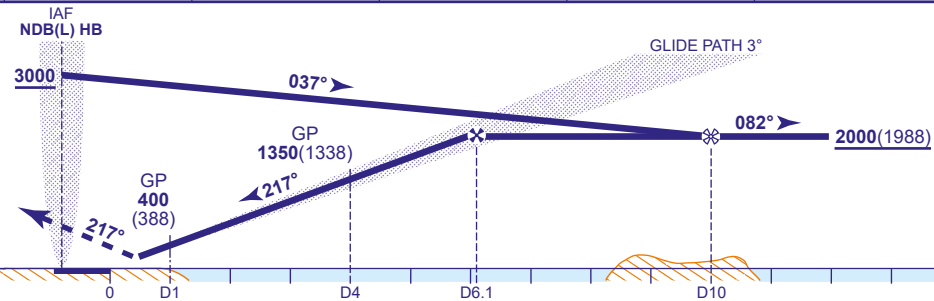
TRANSITION ALTITUDE
6000

RECOMMENDED PROFILE GLIDE PATH 3°, 320FT/NM

DME I-BFH	6	5	4	3	2	1
ALT(HGT)	1990(1978)	1670(1658)	1350(1338)	1030(1018)	720(708)	400(388)

RDH 50

Climb straight ahead to 3000 or I-BFH DME 8 whichever is the earlier then turn left to return to NDB(L) HB to enter the hold at 3000 or as directed.



DME I-BFH zero ranged to THR RWY 22.

Aircraft Category		A	B	C	Rate of descent	G/S KT				
OCA (OCH)	CLIMB GRAD 2.5%	598(586)	608(596)	619(607)		160	140	120	100	80
	CLIMB GRAD 3%	175(163)	185(173)	198(186)	FT/MIN	850	740	640	530	420
VM(C)OCA (OCH AAL)		1040(1025)	1120(1105)	1800(1785)						
Southeast of RWY 04/22		1040(1025)	1120(1105)	1230(1215)						

AIRCRAFT UNABLE TO RECEIVE DME I-BFH

Advise ATC. Radar ranges will be provided approaching the FAP and at 4NM and 1NM from the THR on the final approach.

NOTE Direct arrivals available on request to ATC.

CHANGE (5/24): OCA(OCH) CLIMB GRAD 3% MINIMA REVISED.